

colo^o

FILTER

WATER FILTER TWR-E400
USE AND CARE / WARRANTY

TWR-E400



CONTENTS

Product Introduction	3
Handling Precautions	4
Components	5
Installation	7
Operation	11
Maintenance	12
Pre-Service Checklist	13
Specifications	14
Product Warranty	15

1

The COLO water purifier preserves beneficial minerals while removing harmful substances, providing fresh and clean water.

OUR PRODUCT

2

The compact design of the filter saves space under the sink.

3

The faucet, capable of 360° rotation in any direction, enhances convenience.

4

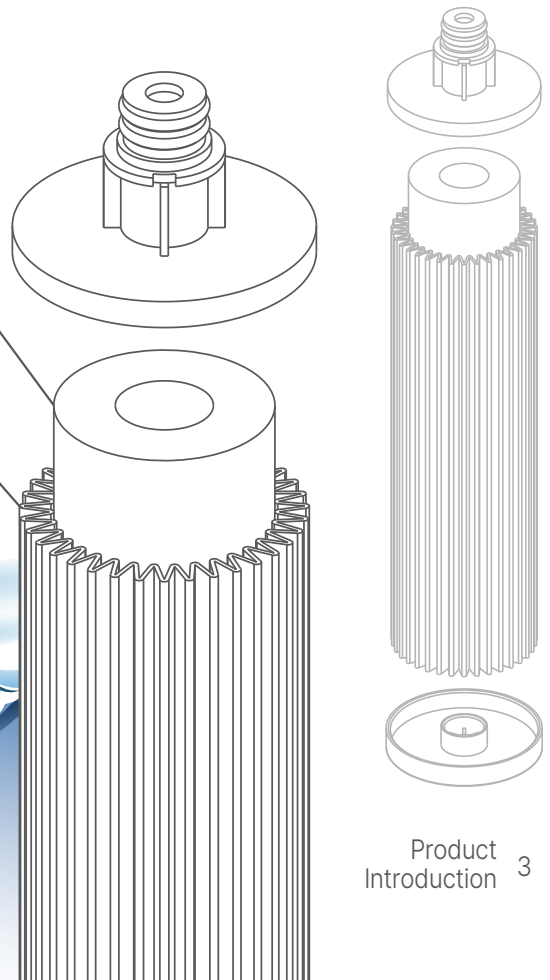
Users can easily replace the filter of the water purifier, given its electricity-free operation and simple structure, and carry out maintenance.

5

The a high flow rate of the filter makes the purified water suitable for cooking, washing, and other uses in addition to drinking.

Filter Functions

- 1 Activated Carbon Block Filter**
Uses high-quality carbon to remove chlorine, lead, and 29 other harmful substances from water.
- 2 Nano Positive Filter**
Removes various harmful substances such as rust and E. coli while retaining beneficial minerals.



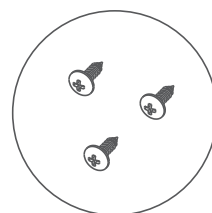
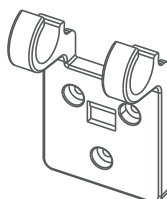
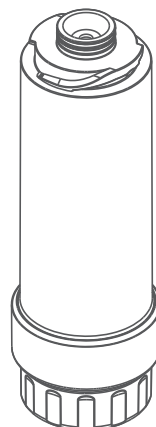
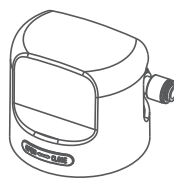
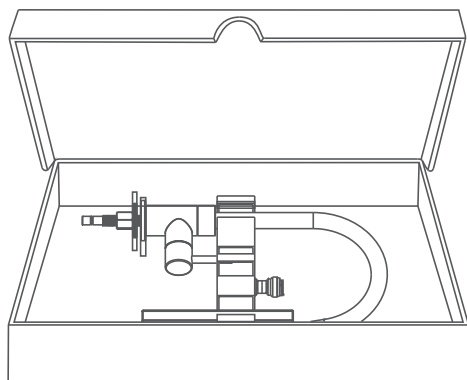
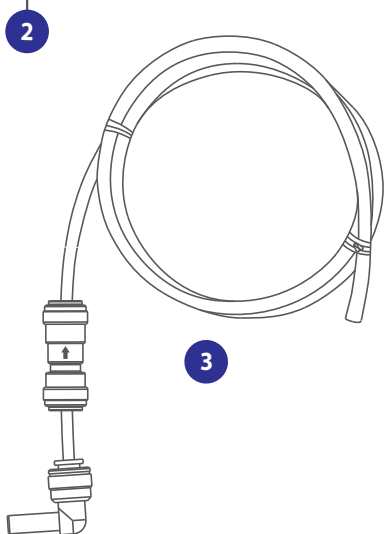
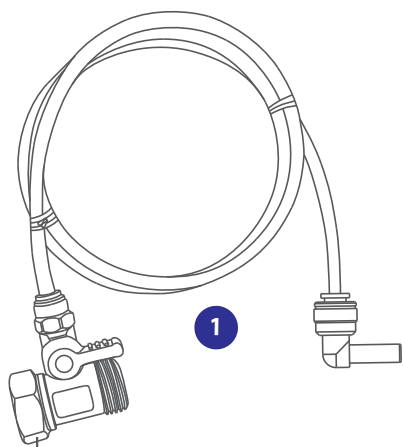
Handling Precautions



Warning

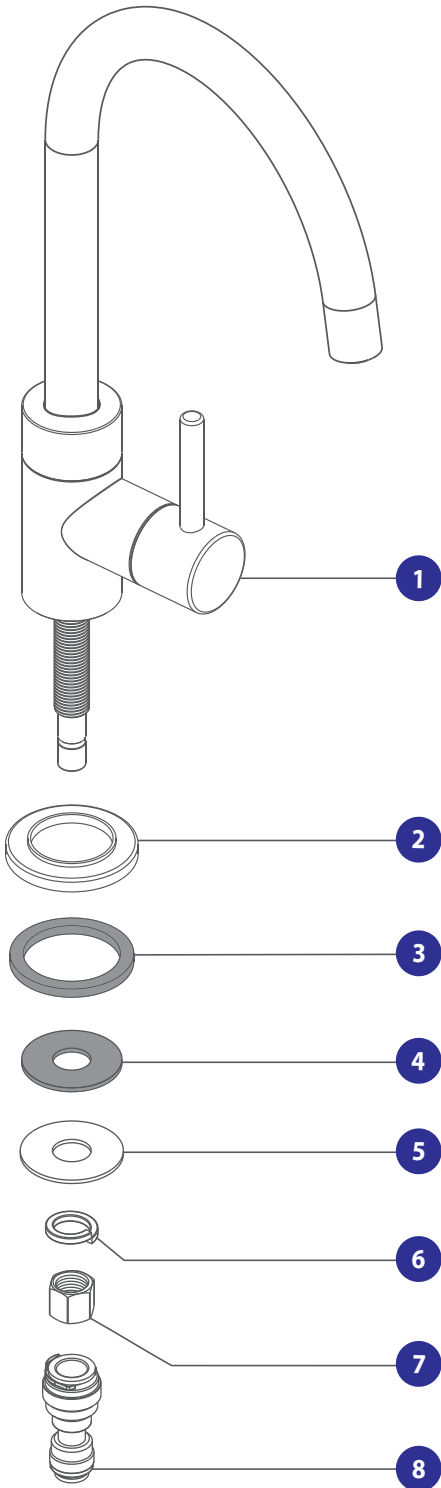
- Only use tap water that meets drinking water quality standards in the water purifier.
- Only use water at or below 40 °C.
Do not use the purifier with water at a higher temperature as this may damage the product.
- Follow the instructions provided in the user manual when relocating or reinstalling the unit.
- Flush the purifier with water for at least 5 minutes when using the unit for the first time, or if it has not been used for more than 48 hours.
- Water with fine black particles comprising activated carbon powder may be discharged when the purifier is first used. This is normal, and the discharged water is not harmful to the human body.
- Fine air bubbles may be generated for some time; this is normal. These bubbles are formed as air passes through the filter.
- To ensure proper operation, follow the relevant operating and maintenance instructions. Failure to do so will void the warranty.

Components



- 1 Connection tube A (1/4")
- 2 Diverter valve (G1/2")
- 3 Connection tube B (1/4")
- 4 Faucet
- 5 Filter head
- 6 Water filter cartridge
- 7 Fixing bracket
- 8 Fixing screws

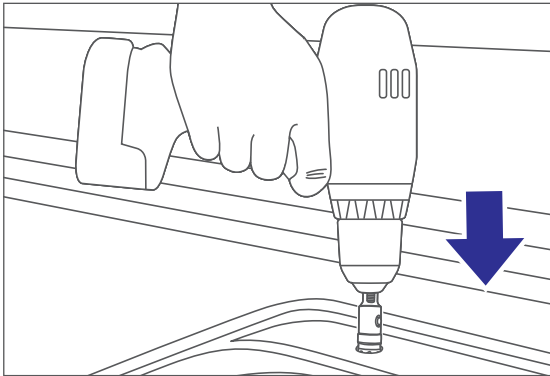
Components



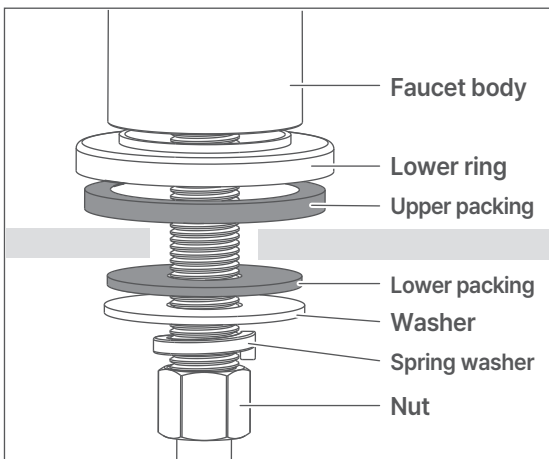
- 1 Faucet body
- 2 Lower ring
- 3 Upper packing
- 4 Lower packing
- 5 Washer
- 6 Spring washer
- 7 Nut
- 8 Connector
- 9 Nut tightening tool

1. Faucet Installation

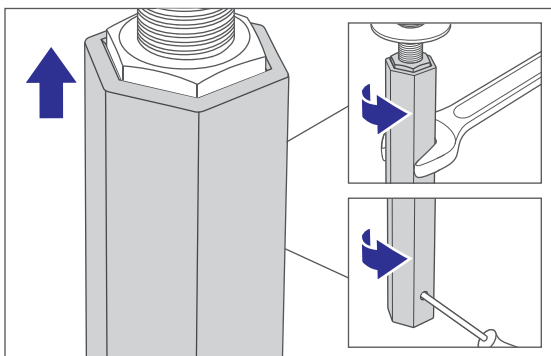
* After removing the packaging, first refer to the diagram on the previous page and check whether any components are missing



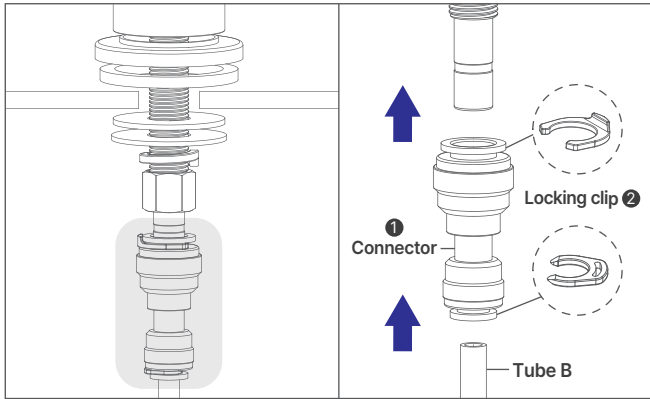
- 1 Determine the location where the faucet will be installed
- 2 Considering the installation location, drill a hole in the sink using an electric drill with a 15-mm hole cutter.



- 3 As shown in the diagram, insert the faucet, packings, and washer into the hole one by one in sequence.



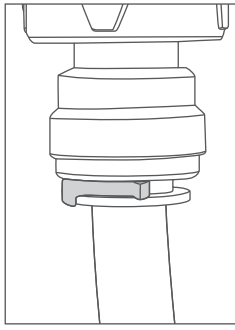
- 4 Using the tightening tool, turn the nut in the direction of the arrow to secure it firmly.



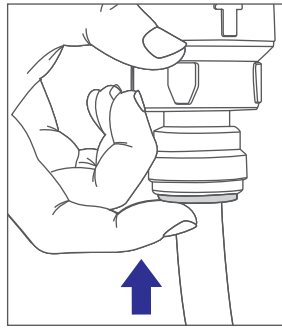
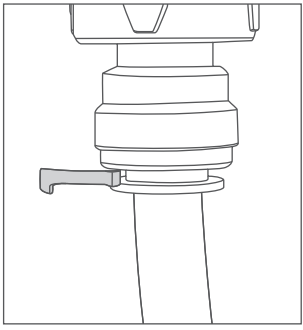
5 Firmly insert the connector into Tube B so that the components are joined together as tightly as possible. Then, insert the locking clip to secure it.



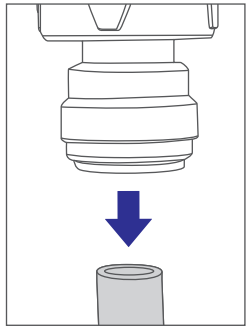
[When removing Tube A and B]



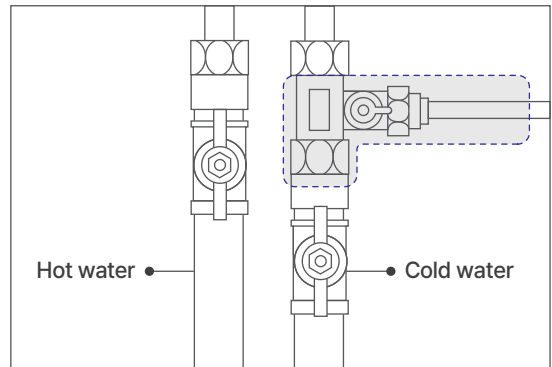
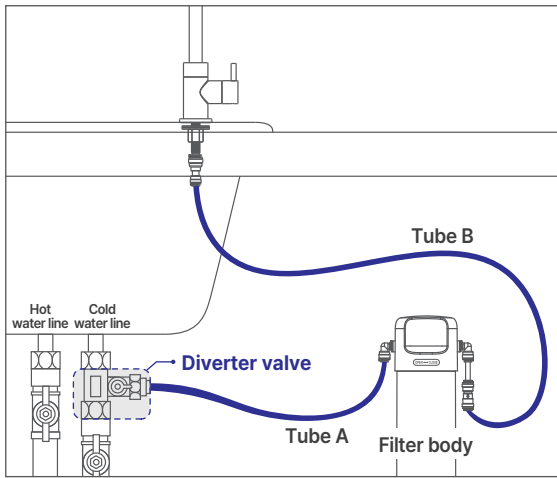
(1) Remove the locking clip.



(2) Pull the tube out to remove it while pressing in the direction indicated by the arrow.

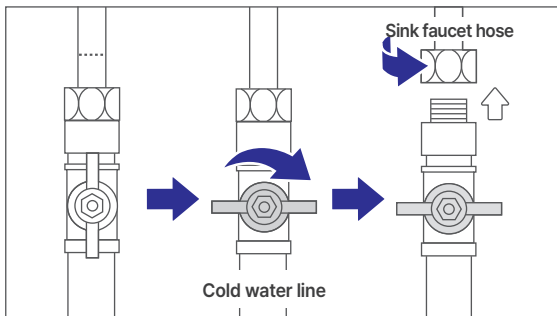


2. Diverter Valve Installation

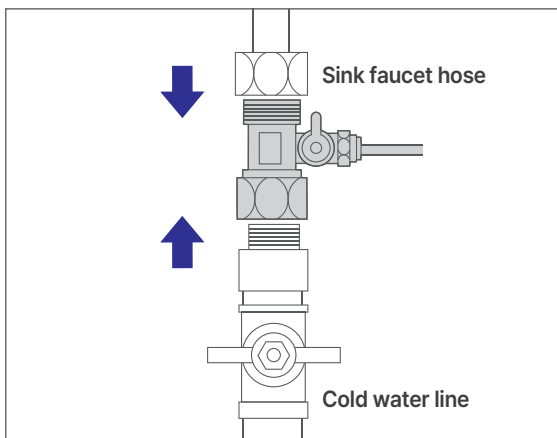


►► **The configuration achieved after completing the installation is shown here.**

Install the diverter valve according to the instructions below.

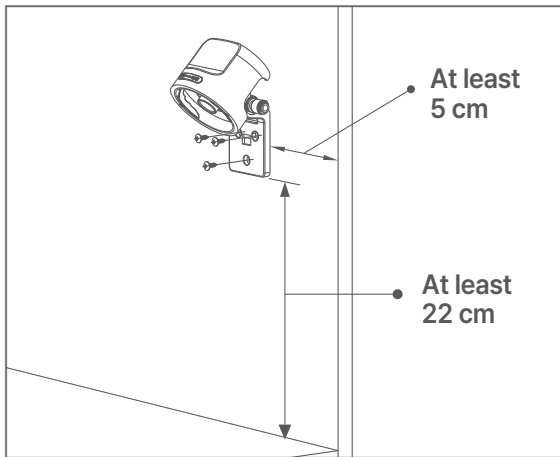


- 1 Check which pipe supplies cold water. (Do not use the hot water line.)
- 2 Close the cold water supply valve.
- 3 Disconnect the sink faucet hose.

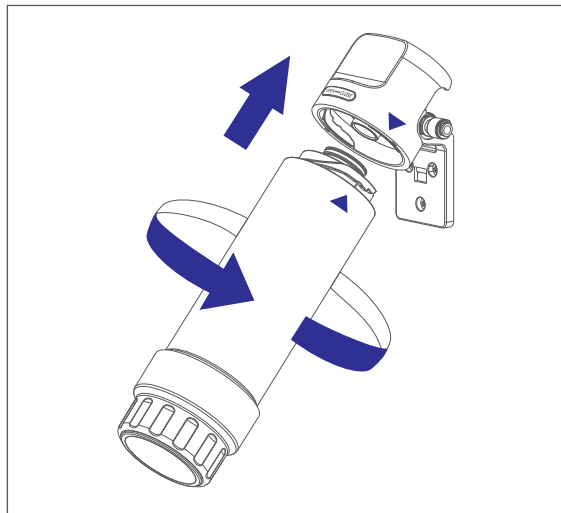


- 4 Connect the diverter valve between the cold water line and the sink faucet hose as shown in the diagram.

3. Filter Installation

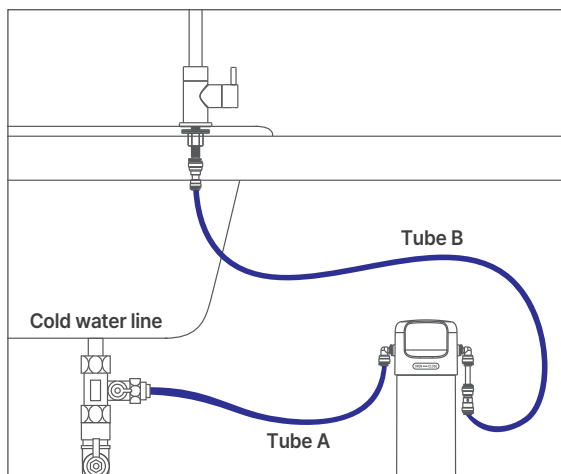


- 1 As shown in the diagram on the left, install the mounting bracket with the three screws at the location where the filter will be installed.



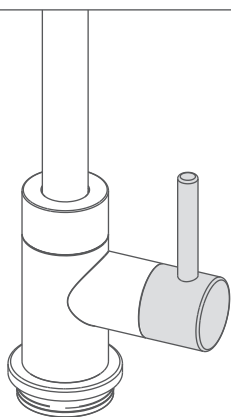
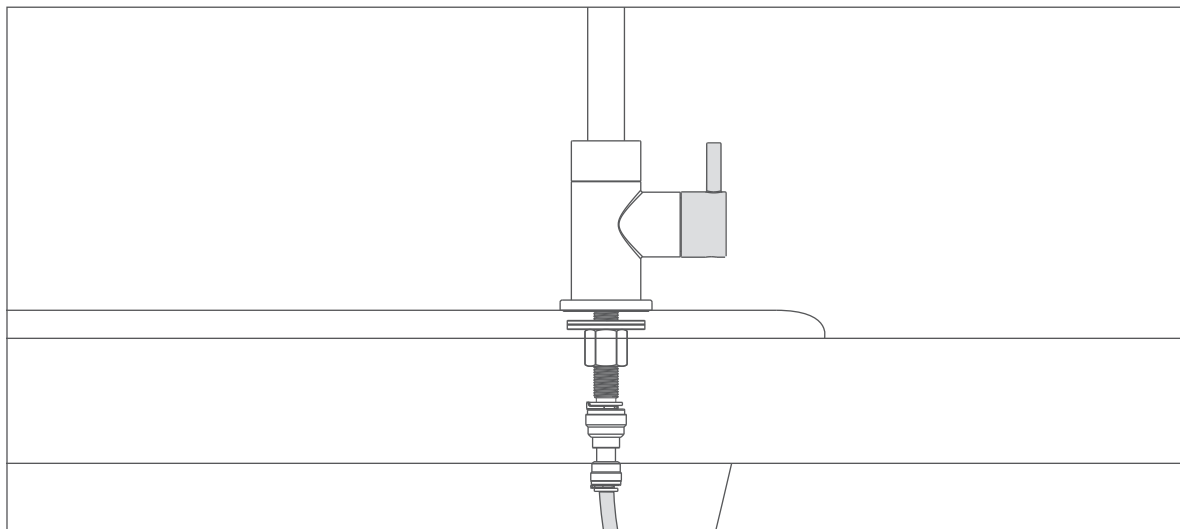
- 2 Insert the cartridge into the filter head and rotate it **clockwise** to secure it.

* Turn the cartridge until the triangular marks align. Failure to do so may cause leakage.

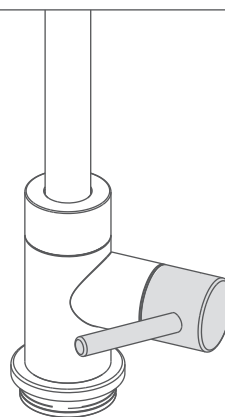


- 3 Insert Tube A and Tube B into the filter body as shown in the diagram on the left.

Operation



When the valve is positioned **vertically**,
no water will flow.



When the valve is positioned **horizontally**,
filtered water will flow.

Before first use : Flush the water for approximately 5 minutes.

If the water purifier has not been used for more than 48 hours :

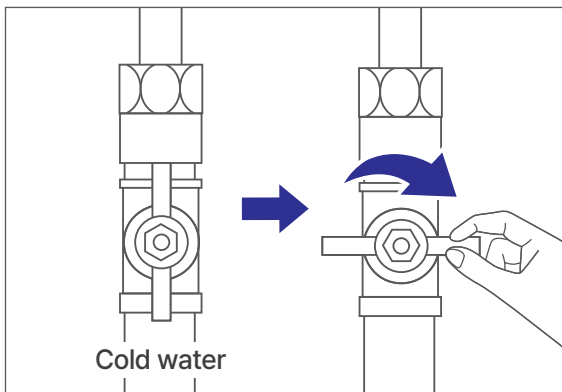
Flush the water for approximately 5 minutes before use.

Maintenance

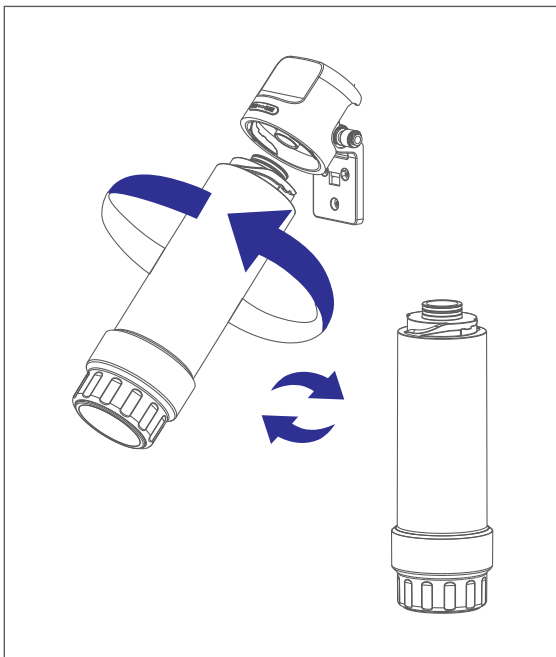
Cleaning

- Wipe the surface gently using a damp cloth and either a mild detergent or a disinfecting detergent that does not contain abrasives.
- Only use lint-free cloths to clean the unit. Do not use polishing cloths, towels, paper towels, or any other materials that may damage the surface of the water purifier.
- Using dishwasher detergents, solvents, or abrasive agents may damage the water purifier.

Water Filter Replacement



- 1 Close the cold water supply valve.
- 2 Turn the existing cartridge **counterclockwise** to detach it from the filter head.
 - * A small amount of water remaining in the connection hose may drip out.
- 3 Insert a new cartridge into the filter head and rotate it clockwise to secure it.
 - * Turn the cartridge until the triangular marks align. Failure to do so may cause leakage.
- 4 Reopen the cold water supply valve and check for leakage. If leakage occurs, repeat steps 1 and 2.
 - * **If leakage persists, discontinue use** and contact the manufacturer.



[After Replacement]

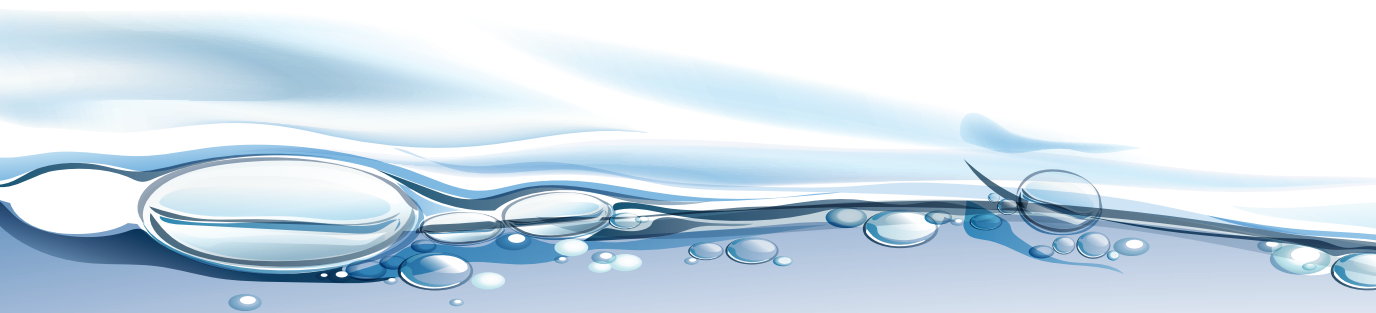
Before use, flush the water for approximately 5 minutes.

Pre-Service Inspection Checklist

Symptom	Check	No	Yes
The water tastes strange.	Has the water purifier been unused for too long?	Service request	Flush the water for at least 15 minutes before use.
	Is it time to replace the filter?	Service request	Replace with a new filter.
The amount of filtered water has suddenly decreased.	Is water being used elsewhere?	Service request	Turn off water usage at other locations and try again. The purifier will not operate properly without sufficient water supply
	Is it time to replace the filter?	Service request	Replace with a new filter.
No water is coming out of the faucet.	Is tap water being supplied?	Wait until water supply is restored. As this is a direct-flow water purifier, water will not be dispensed if there is no tap water supply.	Service request
	Is the valve in the open position?	Turn the valve to the open position.	Service request
	Is water pooled around the product?	-	Shut off the tap water supply and request service.
	Is the tube bent or kinked?	-	Shut off the tap water supply and request service.
Leakage occurs.	Is water leaking from the main body?	-	Check whether the gasket is positioned properly and secured in the upper groove of the filter.
	Is water leaking from the connection parts?	-	Check whether the filter head and main body are aligned and secured properly.
	Is water leaking from the tube?	-	Check the tube for damage.
Leakage occurs, but the cause cannot be determined.		-	Shut off the tap water supply and request service.

Specifications

Model	TWR-E400
Maximum Operating Pressure	7 bar
Minimum Operating Pressure	1 bar
Maximum Water Temperature	104°F (40°C)
Minimum Water Temperature	39°F (4°C)
Flow Rate (at approx. 2.5 bar)	4 L/min
Filter Cartridge	Nano positive filter + activated carbon block filter
Effective Filtration Capacity	3000 gal
Filter Replacement Cycle	6 months (based on a usage of 10 liters per day)



Product Warranty

- * Regular user maintenance is required after the initial installation.
To prevent leakage and ensure safe use, inspect the underside of the sink regularly.
Inspection is mandatory for the first 7 days after installation

| Warranty Period: 1 year from the date of purchase |

1. The manufacturer or seller provides free A/S for defects in performance or function that occur under normal use conditions.
2. The warranty period is calculated based on the date of purchase.
3. Products purchased secondhand are not covered by the warranty, and no responsibility is assumed for repairs or compensation for damages.

| Installation Maintenance Period: 7 days from the date of installation |

1. The installation maintenance period applies only to installations completed during a visit by a technician. If installation-related defects such as leakage occur within 7 days after installation, a free revisit by a technician may be requested.
2. However, service fees may be charged if the issue is determined to be caused by customer fault (e.g., relocation, reinstallation) after the technician's visit.

- * This product is designed to be maintained by the user, and user management after installation is mandatory.
- * The manufacturer assumes no responsibility for performance or functional issues or damages caused by the user's negligence in maintaining the product.

| COLO Filter A/S Terms |

1. If a failure occurs due to a defect in the product, a free service or replacement will be provided within the warranty period. After the warranty period, repair or replacement will be carried out at cost.
2. Even within one year, A/S requests involving product disassembly or installation changes due to relocation or moving will be handled as paid service.
3. Use of components not provided by the company, damage caused by user error, and premature clogging of the filter due to water quality are excluded from A/S and compensation for damages.
4. If the same defect occurs in a replacement product within a period of one month, the product may be replaced again or refunded at the purchase price.





colo
FILTER

Manufacturer. Seondo Electronics

Address. (10880) 7-29, Sinchon 2-ro, Paju-si, Gyeonggi-do **Website.** www.seondoelec.com